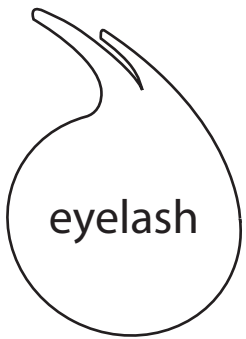


sew here

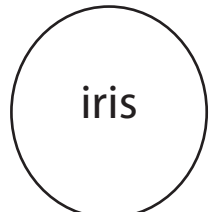
cut here



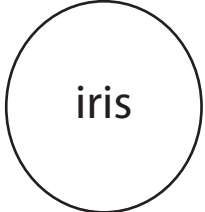
eyelash



eyelash



iris



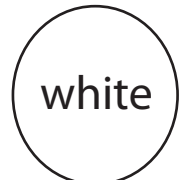
iris



pupil



pupil

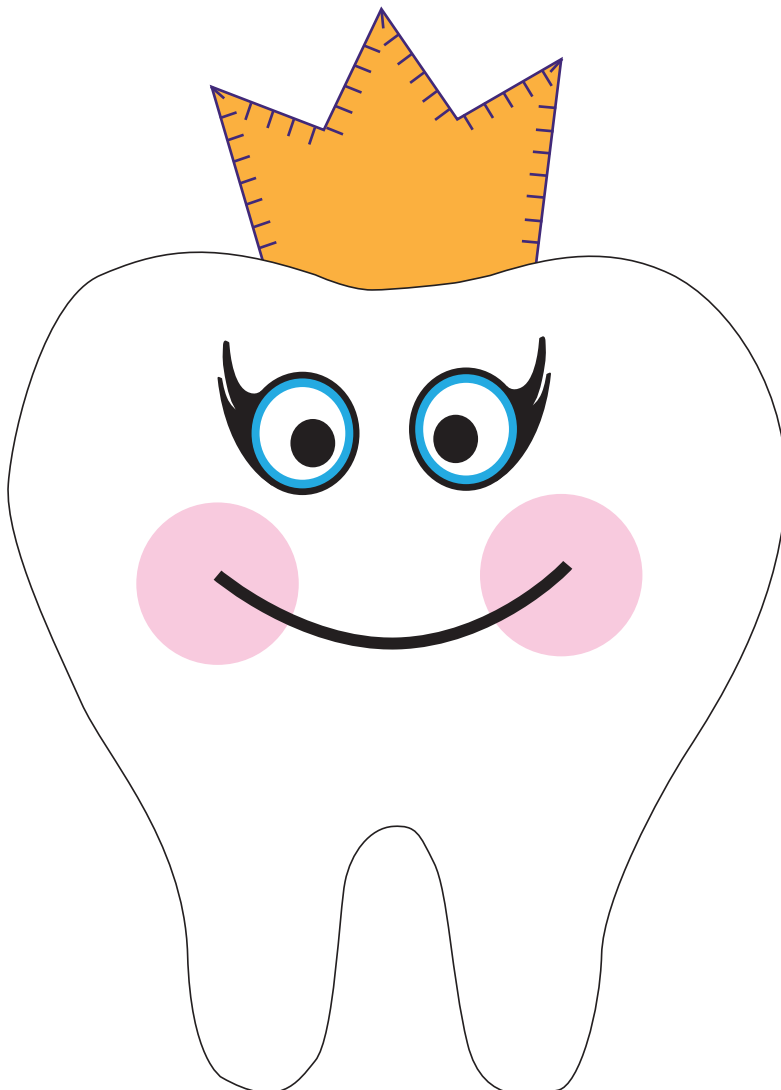
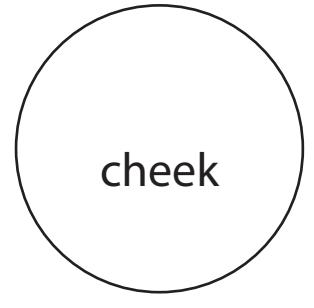
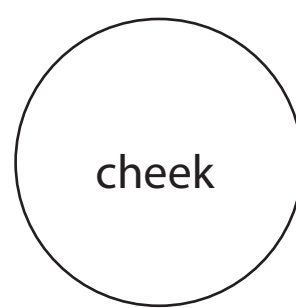
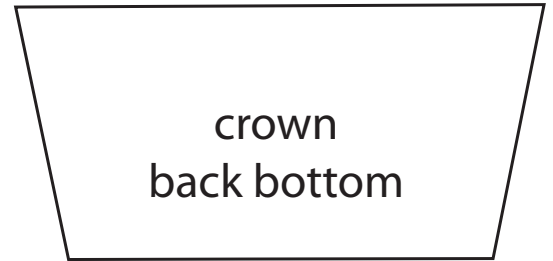
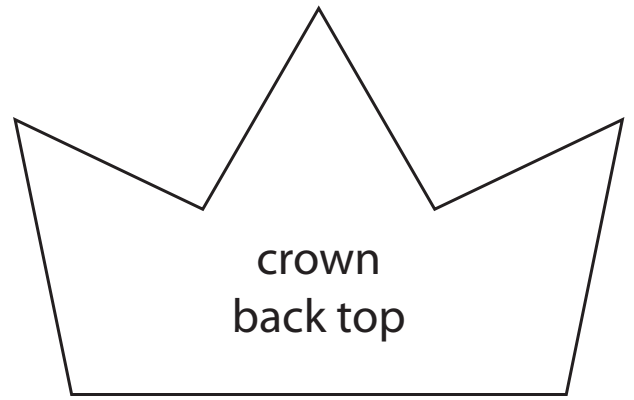
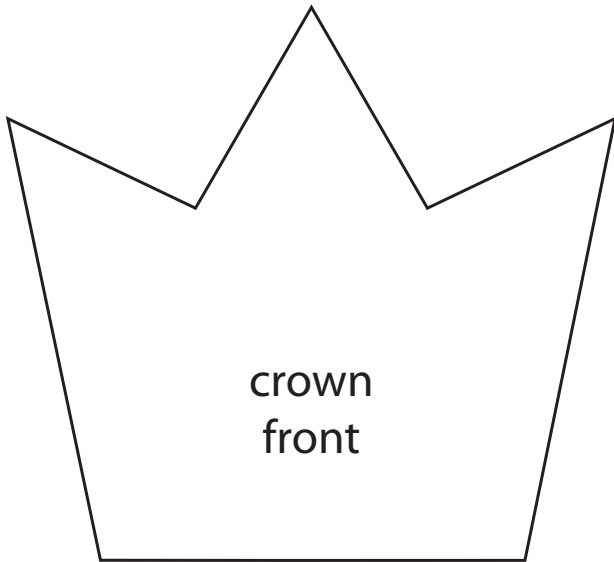


white



white





1

cut out 2 pieces of fabric for tooth shape; pin together and sew per pattern (leave opening in top), turn and then stuff

2

embroider initial if desired then hand stitch crown together using a blanket stitch or whip stitch (leave opening in back open for tooth)

3

insert crown into top of tooth and hand stitch into place

4

cut eyes, nose, mouth and cheeks out of felt and adhere to tooth front with hot glue

